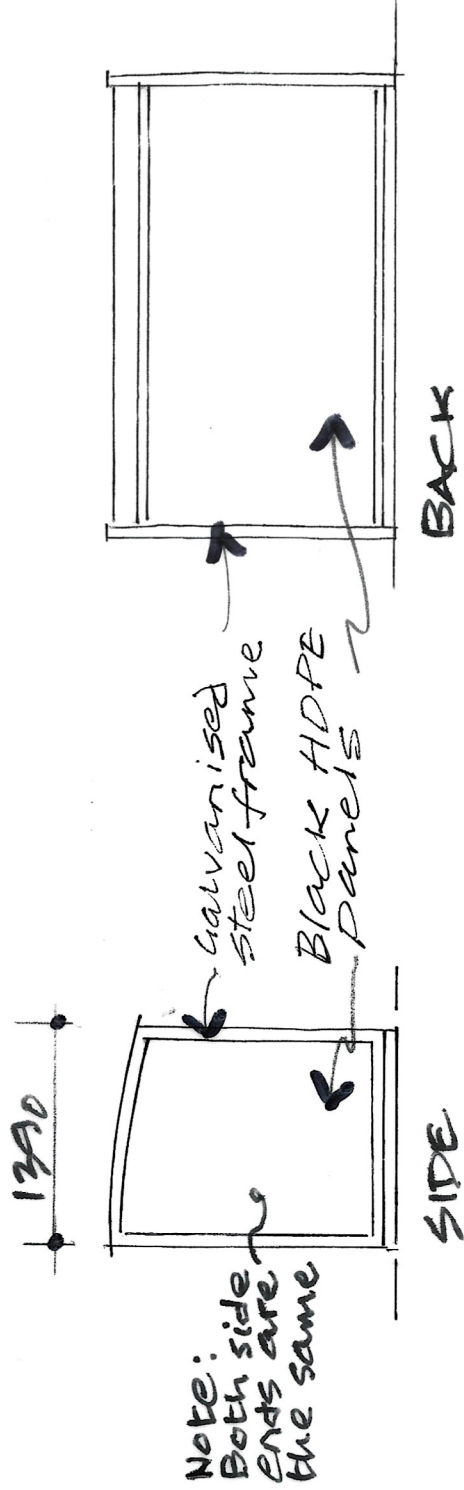
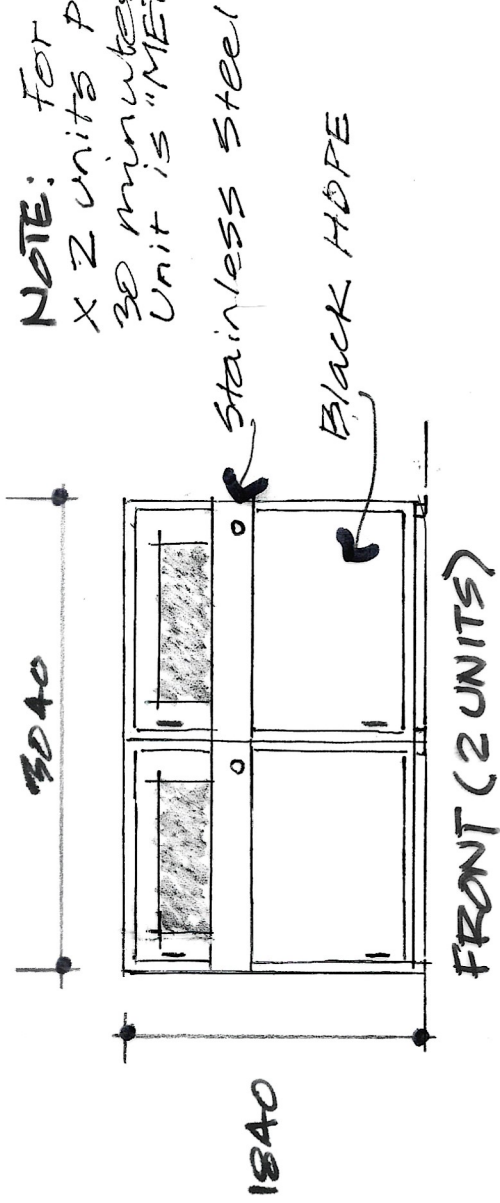


NOTE: For Nicholson House 2nd.
 X 2 units proposed. HDPE panels
 30 minutes FR # 100% recycled.
 Unit is "METROSTOR PBM Firenze"



RECYCLING BINS AT NICHOLSON HOUSE
 BIN ELEVATIONS SCALE 1:50 (E) A4 DWG. NO SK2
 17.8.21 REV'A' Both side ends are the same noted